

Slim line models are designed for typical application as disinfection, photo-oxidation and inactivation of viral & bacterial pathogens.

Designed for large applications :

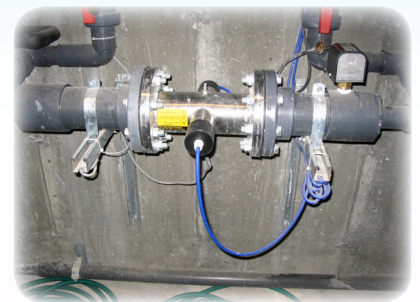
- Drinkable water disinfection (inactivation of Cryptosporidium, Giardia)
- Disinfection of pools, fountains, spas & leisure aquatics
- Food and industrial process
- Fish Farm
- Waste water disinfection
- Cooler tower
- Ozone depletion

Slim line reactor is equipped of medium pressure lamps with multi wavelengths providing a spectrum ranging from 240 to 340 nm which completely destroys and therefore disables the microorganisms' self repair mechanism.

Slim Line offers a wide flow rate range from 10 to 650 m3/h (40 to 2900 US gpm).

UV reactors are equipped with switch temperature & inlet flow switch.

Control panel is supplied with HMI, a modem is offered in option and allows a control and monitoring of unit. An UVT sensor is also available.



Model	Diameter mm (")	Lamps number	Power consumption	Electrical supply
947 2025	100 mm (4)	1	0.5 kW	208-240 V 50-60 Hz
947 2027	100 mm (4)	2	1 kW	208-240 V 50-60 Hz
947 2220	150 mm (6)	1	1.2 kW	208-240 V 50-60 Hz
947 2221	150 mm (6)	1	2.2 kW	480-575 V 60 Hz 400 V 50Hz
947 2222	150 mm (6)	2	2.2 kW	480-575 V 60 Hz 400 V 50Hz
947 2420	200 mm (8)	1	2.2 kW	480-575 V 60 Hz 400 V 50Hz
947 2422	200 mm (8)	2	4.2 kW	480-575 V 60 Hz 400 V 50Hz

The characteristics listed below are tentative and subject to change without notice. Some models can be adapted to specific operating conditions